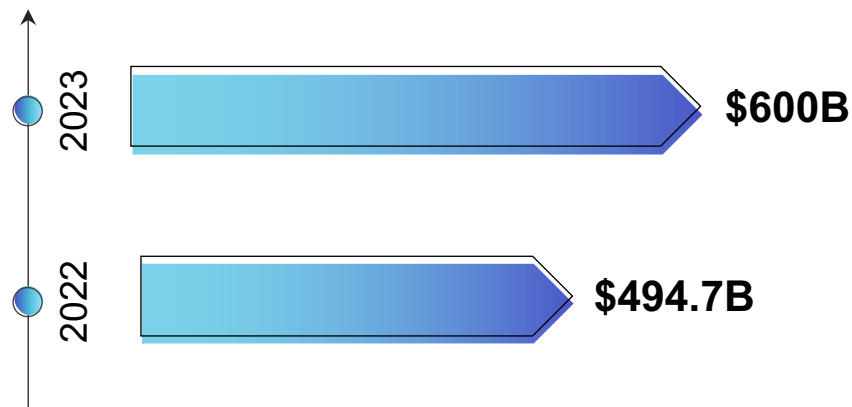




# Cloud adoption is (continuously) on the rise

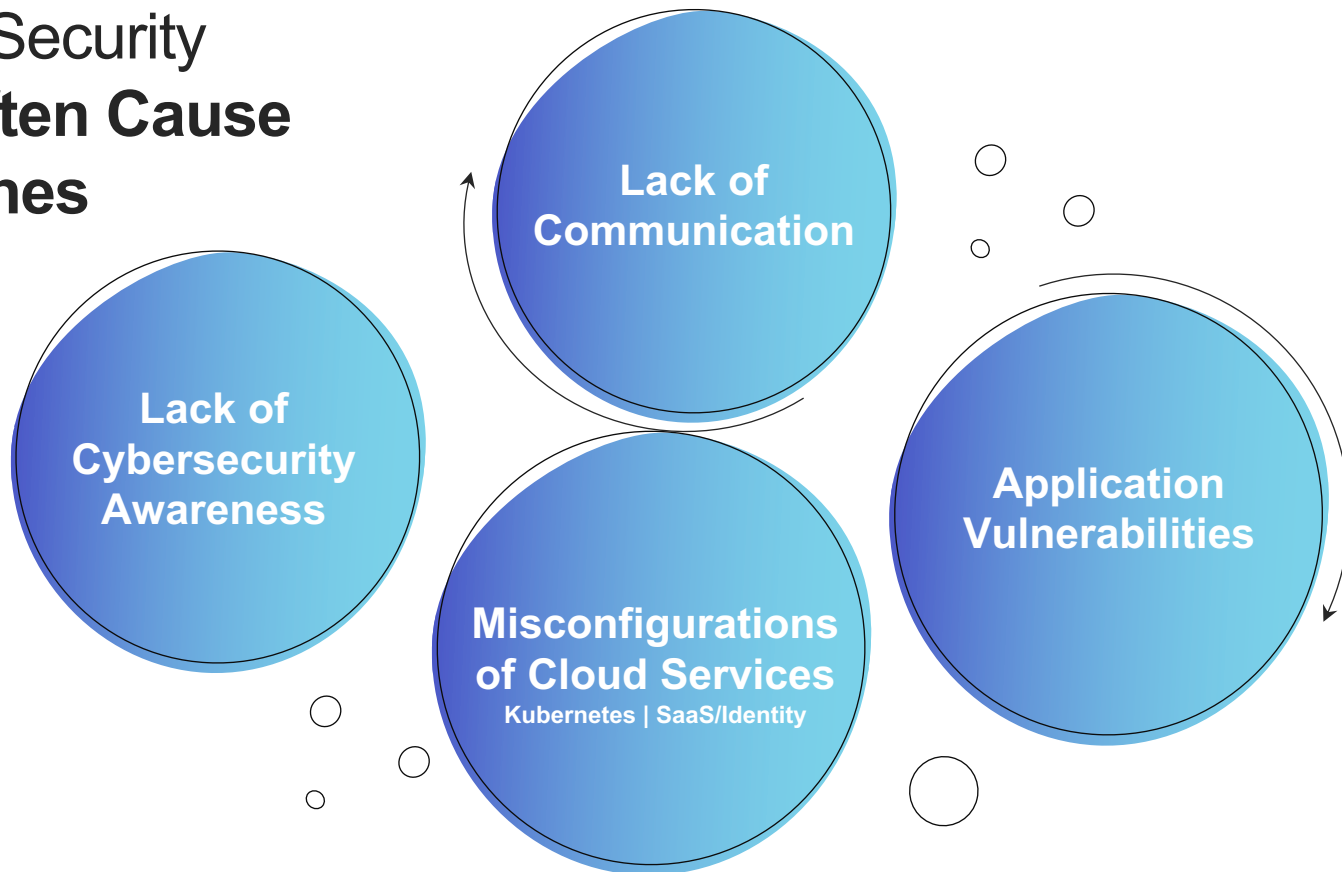
**Cloud adoption continues to rise at an accelerated pace.**

However, cloud migration and adoption might lead to implementing technology without the necessary cloud security considerations.



Global public cloud services spend, [Gartner](#)

# Poor Cloud Security Practices Often Cause Data Breaches



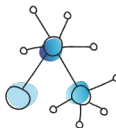
# Misconfigurations of Cloud Services May Cause Severe Damage



## Imperva data breach

The breach exposed customer data on its cloud WAF product, demonstrating how human errors like misconfigurations continue to plague the industry

**imperva**



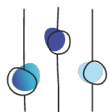
## Capital One data breach

A threat actor gained unauthorized access to sensitive data with Personally Identifiable Information (PII), including social security numbers and linked bank account numbers.

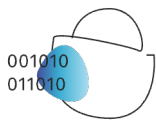
**Capital One**

# To tackle advanced threats, organizations must **strategize and use multiple tools and expertise**

The [Cyber Defense Matrix](#) aims to help enterprises identify security gaps and the tools to address them effectively



**Cloud security posture management (CSPM)**



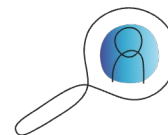
**Cloud workload protection platform (CWPP)**



**Security orchestration, automation, and response (SOAR)**



**Cloud-native detection and response (CNDR)**



**Incident response (IR)**

# Robust Cloud Security Demands a Multipronged Approach

Here are some frameworks to watch:

## **CISA recommendations - Cloud Security Technical Reference Architecture (TRA)**

Illustrate recommended approaches to cloud migration and data protection

## **Cybersecurity Mesh Architecture (CSMA)**

Improves the company's defense posture through collaboration between different tools and makes security more agile and scalable on demand.

## **The Cyber Defense Matrix**

Delivers complete visibility at a glance into the execution of cloud security strategy and prioritizes investments accordingly.

## **The DIE (distributed immutable ephemeral) security model**

Minimizes complexity and enforces a security-by-design approach instead of a bunch of security tools.



## Team8 Group is a global company-building venture group that creates and invests in companies focusing on Cybersecurity, Data & AI, Fintech, and Digital Health.

Team8's signature foundry model is designed to identify meaningful problems, create theses on potential solutions, and build innovative companies that tackle these challenges.

For more information visit <https://team8.vc/>

To read the full article

